

## Catalyst Meraki 9300 AT-A-GLANCE

# When Simplification and Functionality Meet

It has never been easier to onboard and manage your Catalyst switch.

SIMPLE | SCALABLE | FLEXIBLE | SECURE



## Simply powerful Catalyst Meraki 9300

### Unlocking operational efficiency from day 0 starts here

#### SIMPLE

- True zero-touch provisioning and easy-to-set-up and manage configurations
- Real-time health monitoring and guided resolutions
- Out-of-the-box management and analytics on an intuitive dashboard

#### FLEXIBLE

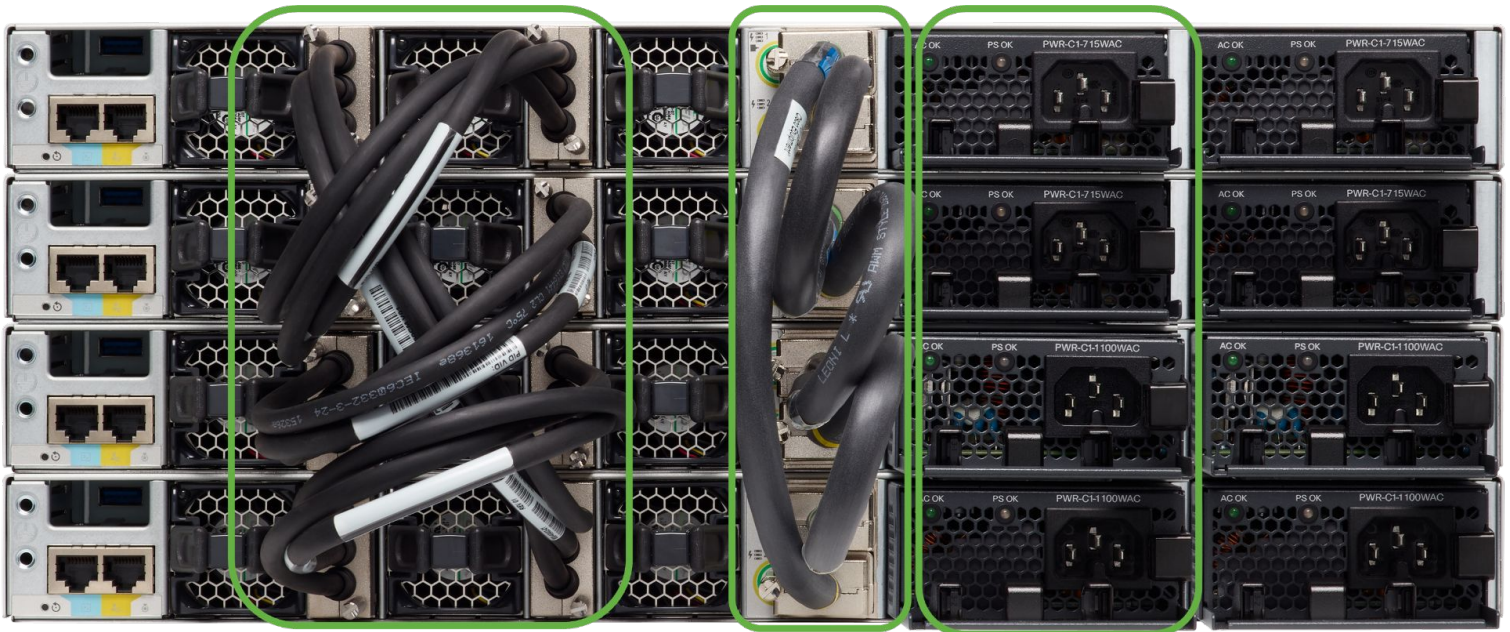
- Schedule and stage firmware upgrades remotely
- Program integrations with Meraki APIs and ecosystems
- Monitor and manage all Meraki licenses from one single UI

#### SCALABLE

- Get immediate visibility and remote control across the network
- Manage all Meraki products in one place, from security to IoT
- Provision and manage thousands of ports in one place

#### SECURE

- Intent-based security with Adaptive Policy
- Real-time traffic analytics with layer 7 visibility, rich telemetry, and endpoint modeling
- Seamlessly integrate TrustSec across Cisco domains



**IMPROVED**  
Physical stacking

**NEW**  
StackPower

Modular power supply

## Get advanced networking without compromising operational efficiency and scalability



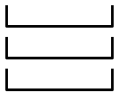
### Modular uplinks

Get flexible hardware upgrades and easier management with hot-swappable uplink modules.



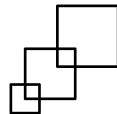
### Wide range of mGig speeds

Address legacy infrastructure issues with PoE on all 24/48 ports, along with SFP and mGig.



### StackPower

Create additional power capacity by pooling sources to power more PoE devices.



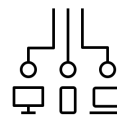
### Improved physical stacking

Provide more throughput for Wi-Fi 6 and IoT, and get higher network resilience with up to 480 Gbps.



### Adaptive Policy

Identify and enforce security policies of users, devices, and application with network based micro-segmentation.



### 60 W UPoE density

Power your smart space needs with UPoE and IEEE 802.3bt support.

Please note: Adaptive Policy feature requires Advanced licensing.

[Learn More](#)